

GUSTAFS LINEAR SYSTEM

GUSTAFS 
DESIGNED FOR EYES AND EARS

WALL GUSTAFS LINEAR RIB

A RIB WITH MANY UNIQUE BENEFITS

Our products are based on a fibre gypsum core which has very good properties regarding both fire safety and acoustics. The gypsum rib is less sensitive to changes in temperature and humidity which in turn maintains the ribs' linearity over time. All together, this unique combination contributes to a rib suited for applications not only in large areas but also in a wide variety of demanding situations.



FIBRE GYPSUM CORE

Our ribs are based on a fibre gypsum core which has excellent properties regarding dimension stability, impact resistance, fire safety and acoustics, qualities which effectively eliminate most traditional wood-based choices. Altogether, this unique combination results in a rib suited for large areas and a wide variety of demanding situations.



FORM STABILITY

Gustafs Linear Ribs with a Fibre Reinforced Gypsum Core, in combination with our unique Capax installation system, guarantees real dimension stability, resulting in 100% straight aligned Ribs over their full lifetime, regardless humidity and temperature changes.



QUICK INSTALLATION

Capax is our unique aluminum profile installation system that provides you a concealed, reliable, quick and cost saving installation. The Quick-Up assembly system guarantees a perfect visual result. No tools are needed to assemble the interlocking components. A demountable version is available, ideal when access to the ancillary systems is required.



STABILITY

Wood based ribs will show bulging or shrinkage when humidity and temperature change. A fiber gypsum rib is considerably less susceptible to these effects. Over time this will result in a planer and more linear installation.



INSTALLATION

All Gustafs Linear solutions are installed with an extremely user-friendliness provided by the Capax Quick-Up concept, with interlocking components, eliminating the need for tools and offering demountable installations.



SUSTAINABILITY

Using a fiber gypsum core naturally results in extremely low emissions and a very high rate of recycled content. Being located in Sweden gives us the opportunity to produce with renewable power sources only.



FIRE

The high density nonflammable core and the surface veneer's strongly bound adhesion to the fiber gypsum rib give our ribs the classification "Reaction to fire B-s1,d0."



ACOUSTICS

Our linear system automatically gives a relatively large open area of 24% which warrants for a good sound absorption over a wide band of frequencies. The three dimensional shape will also act like a sound diffuser.



veneer

Wood has a natural variation in structure and colour tone which ages in harmony with nature. The fact that wood is a natural material is an intrinsic aspect of its charm and attraction. It goes without saying that we do our utmost to fulfill requests for other veneers. We offer two choices of genuine veneer, NATURE and GEMINI.



lacquer & gloss

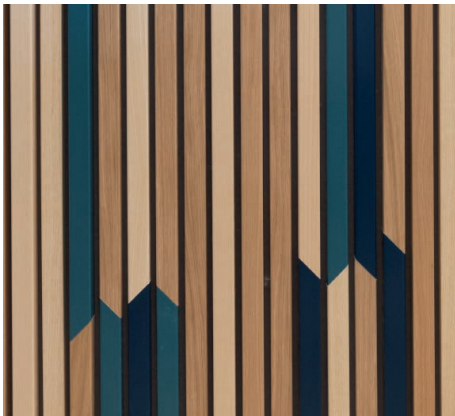
Prior to delivery the ribs are given a resilient and attractive surface finish. A clear lacquered finish is by far the most common maintenance-free and durable finish for wooden surfaces. Utilizing a multi-stage lacquering process, our surface finish achieves these demands while aspiring to maintain technical aspects such as our fire retardation and environmental goals.



pigmented

You can also apply pigmented lacquers or stain the veneer to achieve different effects on your wall or ceiling. Different veneers react different to certain treatments so contact us to guarantee that the final result matches your vision.

A pigment can be used to change the colour tone of the veneer on Gustafs Ribs.



painted

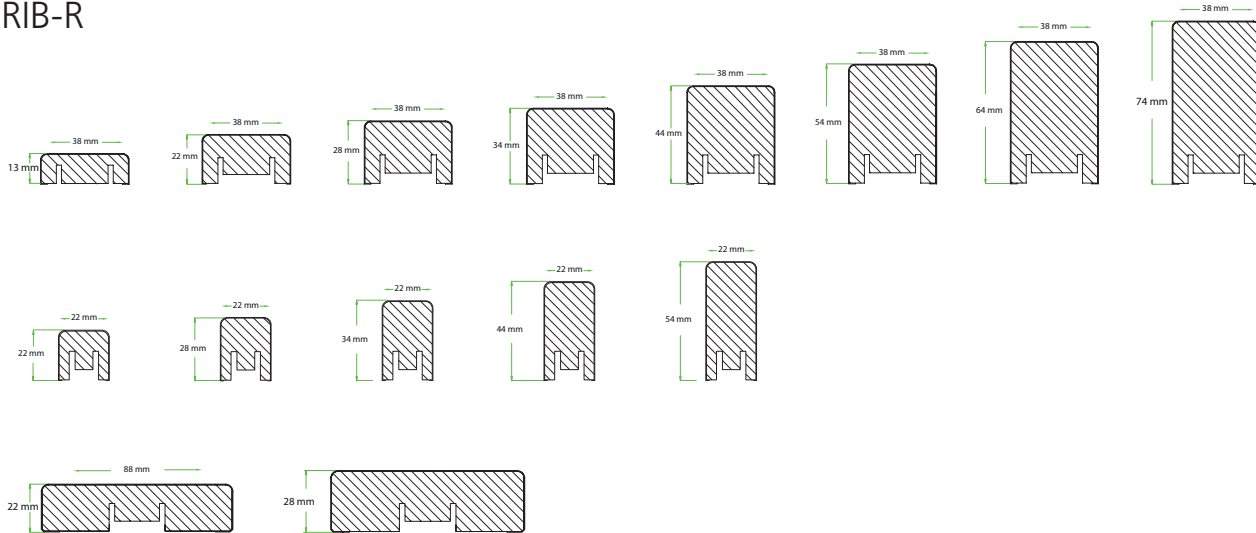
Some surfaces are very highly demanding. Among the many advantages of a Gustafs Rib is its plane and even surface. This enables us to create a painted surface finish which otherwise is extremely difficult to achieve on site. Utilizing our production technology we can produce painted surfaces in a multitude of colors in accordance with for example NCS or RAL codes.

CUSTOMIZED STANDARD

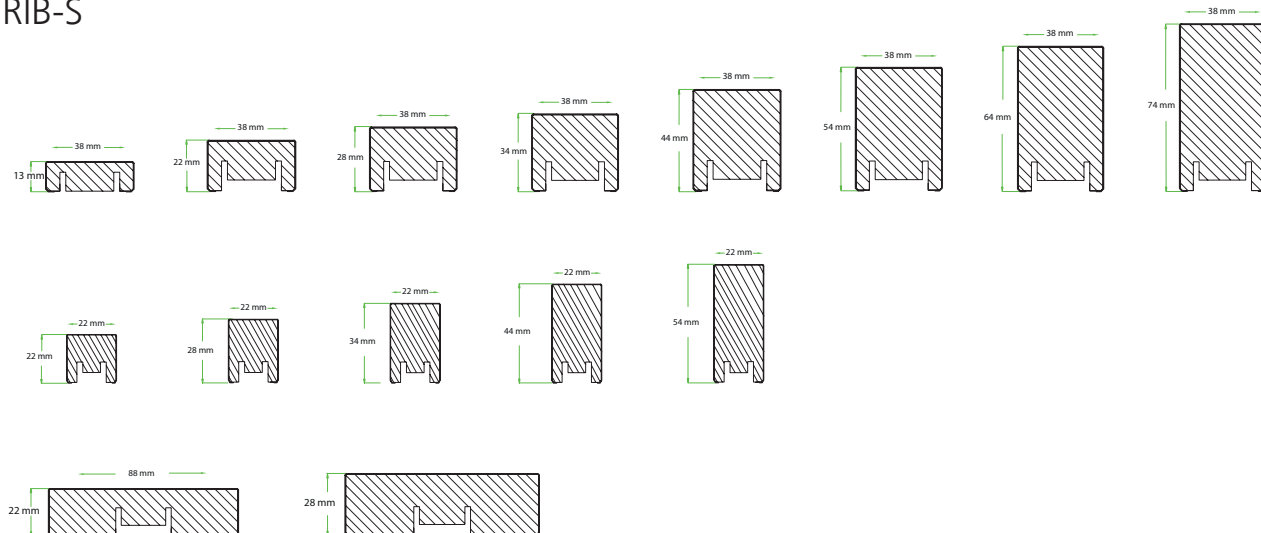
The concept of the Gustafs Linear System is rather to be considered as a customized standard. Many parameters can be adjusted individually before losing the advantages of a standard solution. You can vary the core, the veneer, the colour, the dimensions, open or closed gaps, coloured gaps. Gustafs Linear System can also be used in curved installations. We can assist you with your design wishes and help provide the rib solution with your own personal touch.

The gypsum core ribs are available in a multitude of thicknesses varying from 13 up to 74 mm and can be supplied in R or S design. The standard width is 22 or 38 mm. Using our standard installation method, the gap between the ribs is 12 mm for 38 mm wide ribs and 28 mm for 22 mm wide ribs. You can also combine different dimensions.

RIB-R



RIB-S

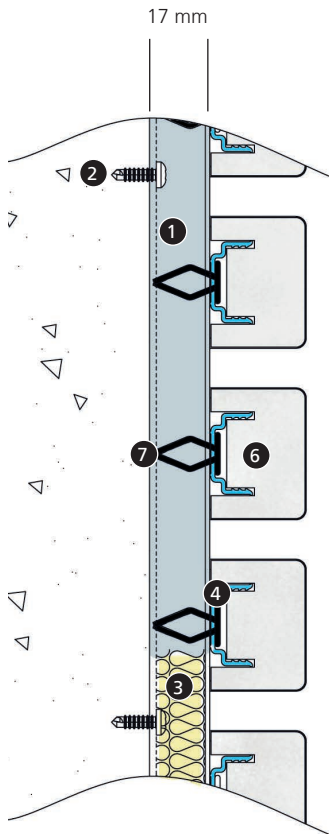


ACOUSTIC VALUES LINEAR RIB

ACOUSTICS	Typ	Spacing	Slott (D)	Ribs on cc	Open area	WALL: 45 mm insulation + 30 mm air void (Hz/ap)								CEILING: 45 mm insulation + 200 mm air void (Hz/ap)							
						α_w	NRC	125	250	500	1000	2000	4000	α_w	NRC	125	250	500	1000	2000	4000
Sound absorption	Linear	12 mm	∞	50 mm	24%	0,70-C	0,80	0,30	0,90	1,00	0,75	0,60	0,65	0,70-C	0,80	0,50	0,95	0,85	0,75	0,60	0,65
	Linear*	12 mm	∞	50 mm	24%	0,65-C	0,70	0,05	0,35	0,90	0,90	0,70	0,65	-	-	-	-	-	-	-	-
	Linear	62 mm	∞	100 mm	62%	-	-	-	-	-	-	-	-	0,95-A	1,00	0,35	0,95	1,00	1,00	0,95	0,75

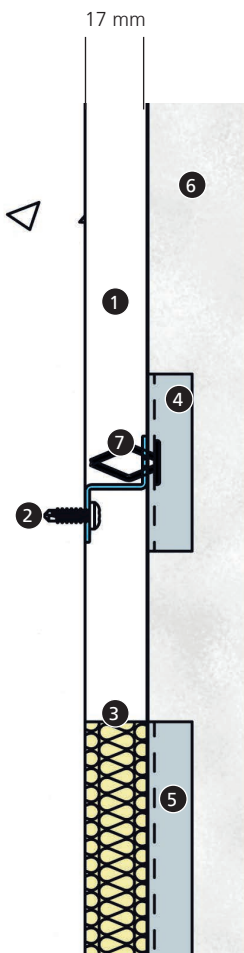
* Tested with 17 mm insulation only, no air void

WALL INSTALLATION

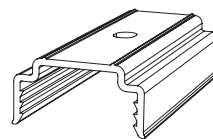


1. Capax BASE-W
2. Wall fixing screw
3. Air gap or insulation
4. Capax U-FIX
5. Capax in-line connector
6. Gustafs Ribs
7. Spring clips
8. U-FIX Screw (22 mm wide ribs screws only)
9. Acoustex - Acoustic felt

The installation is made with screws or, for demountable ribs, spring clips. For 22 mm wide ribs use screws only.



CAPAX WALL PROFILES



U-FIX-50, Gripper for Ribs, with hole, length 50 mm



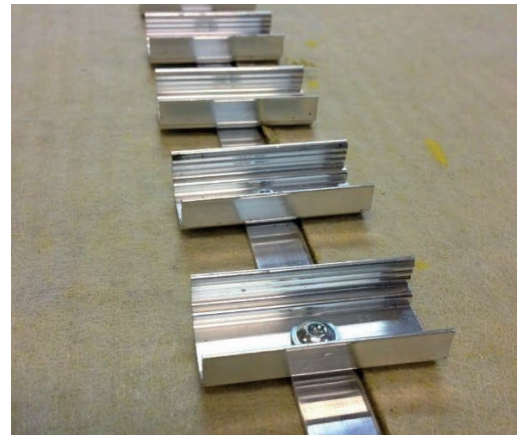
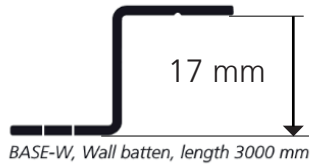
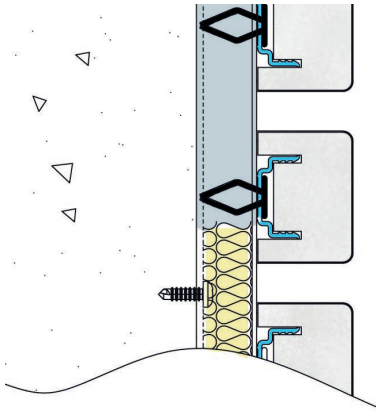
U-FIX 200, In-line connector for Ribs, no hole, length 200 mm



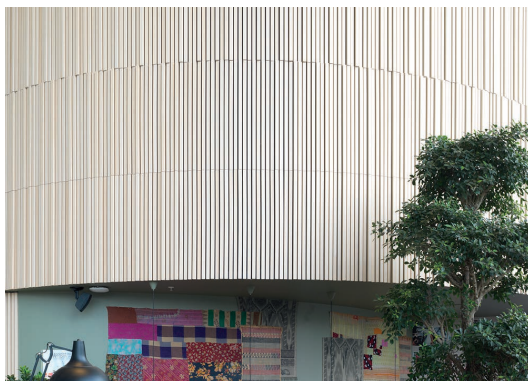
BASE-W, Wall batten, length 3000 mm

INSTALLATION POSSIBILITIES

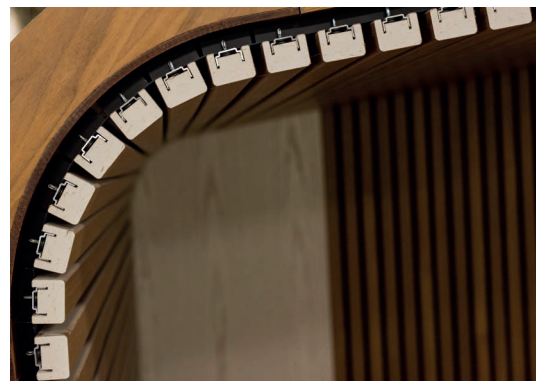
STANDARD INSTALLATION FOR 17MM INSULATION



CONCEALED AND SIMPLE, STANDARD



STANDARD CURVED DOWN TO 300MM RADIUS

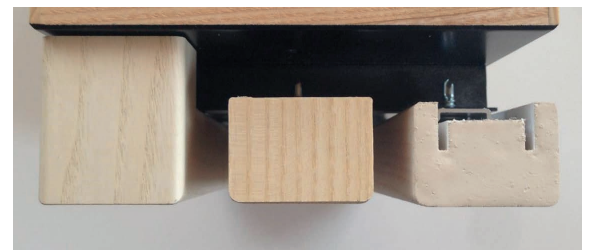


DETAILED SOLUTIONS

DOOR SURROUNDINGS



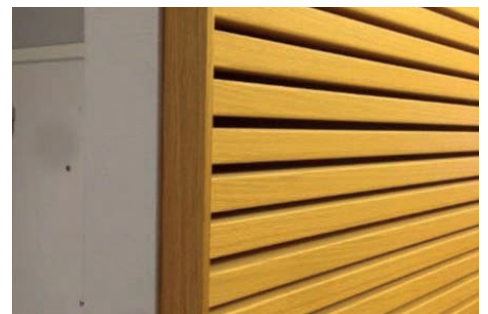
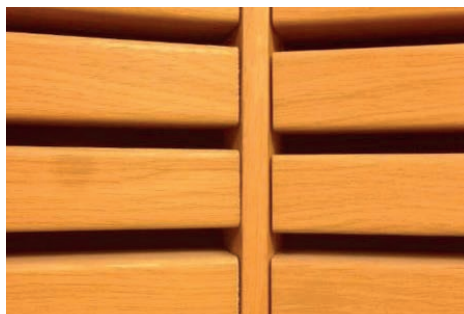
END FINISH



MITERED

VENEERED

PAINTED



FIRE CLASSIFICATIONS

Fire Classifications											GUSTAFS		
											DESIGNED FOR EYES AND EARS		
System	Core Material	Modell	VENEER				HPL		CPL		FOIL		
			Lacquer	Stain	Paint	Print	-	Print	-	Print	-	Paint	Print
Gustafs Linear Rib System	High Density Fibre Gypsum	Rib	B-s1,d0	B-s1,d0	B-s1,d0	B-s1,d0	-	-	-	-	B-s1,d0	B-s1,d0	B-s1,d0
	HIR Sandwich	Rib	B-s1,d0	B-s1,d0	B-s1,d0	B-s1,d0	-	-	-	-	B-s1,d0	B-s1,d0	B-s1,d0
	FR-MDF (B-s1,d0)	Rib	Core Class	Core Class	Core Class	Core Class	-	-	-	-	Core Class	Core Class	Core Class
	MDF	Rib	D-s2,d0	D-s2,d0	D-s2,d0	D-s2,d0	-	-	-	-	D-s2,d0	D-s2,d0	D-s2,d0

SHORT FACTS

Type	Gustafs Linear Rib System
Core	Reinforced fibre gypsum, high density, 1200 kg/m ³
Backside design	Grooved for use with the concealed Capax installation system
Acoustic felt	Black, Gustafs Acoustex 0,2 mm B-s1,d0 White, Gustafs Acoustex 0,2 mm B-s1,d0 Grey, Gustafs Acoustex 0,2 mm B-s1,d0
Standard Dimensions (TxWxL)	<div> 13x38x2970 mm 22x38x2400 / 22x28x2970 mm 28x38x2400 / 28x38x2970 mm 34x38x2400 / 34x38x2550 mm 44x38x2400 / 44x38x2550 mm 54x38x2400 / 54x38x2550 mm 64x38x2400 / 64x38x2550 mm 74x38x2400 / 74x38x2550 mm </div> <div> 22x22x2400 / 22x22x2970 mm 28x22x2400 / 28x22x2970 mm 34x22x2400 / 34x22x2970 mm 44x22x2400 / 44x22x2970 mm 54x22x2400 / 54x22x2970 mm </div>
Customized Dimensions (TxWxL)	20-80x38x2400 / 20-80x38x2550 mm, and other shorter lengths 22x38-88x2400 / 22x38-88x2970 mm, and other shorter lengths 28x38-88x2400 / 28x38-88x2970 mm, and other shorter lengths
Installation system Wall	Gustafs Capax aluminium profiles and clips, containing: Capax Base-W battens installed cc 600 mm perpendicular to the ribs + concealed U-FIX every 600 mm of rib length (5 pcs U-FIX per 2400 mm rib length and 42 pcs of U-FIX per m ² .)
Reaction to Fire	B-s1,d0 (EN 13501-1) (Valid for the whole system, the ribs including the surface, the surface treatment, the installation with a void filled or non-filled with insulation, and allowing all kinds of post treatments like cutting)
TVOC	Approved emissions (EN ISO 16000-9)
Formaldehyde	Approved emissions (EN 717-1)
Urea formaldehyde	Not added
Recycled Material	17% Post Consumer
Certified Wood	FSC available, Certificate Code: SCS-COC-005137
EPD	Available
Production Site	City: Gustafs / country: Sweden
Life time	Expected > 50 years

Gustafs Scandinavia AB
Stationsvägen 1
SE-781 60
Gustafs, Sweden

Tel: +46 (0)243 79 20 20
Email: info@gustafs.com
www.gustafs.com

GUSTAFS
DESIGNED FOR EYES AND EARS