

# GUSTAFS BF STRIPE XL

**GUSTAFS** ■■■  
DESIGNED FOR EYES AND EARS

## WALL BF STRIPE XL

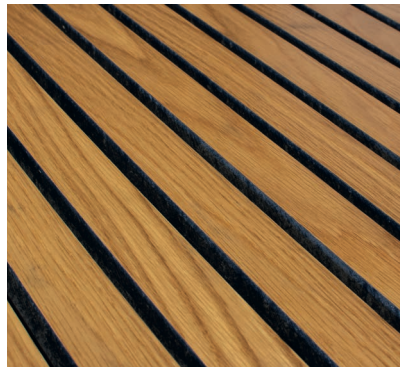
### A LINEAR RIB WITH FIRE CLASS A2-s1,d0

Gustafs Stipe XL is a unique product with its fire classification A2-s1,d0. The dark gypsum core of XL Stripe is less sensitive to changes in temperature and humidity which in turn maintains the ribs' linearity over time. All together, this unique combination contributes to a rib suited for applications not only in large areas but also in a wide variety of demanding situations.



#### DARK GYPSUM CORE

Our Stripe XL are based on a dark fibre gypsum core which has excellent properties regarding dimension stability, impact resistance, fire safety and acoustics, qualities which effectively eliminate most traditional wood-based choices. Altogether, this unique combination results in a rib suited for large areas and a wide variety of demanding situations.



#### FORM STABILITY

Gustafs Stripe XL with a Dark Fibre Reinforced Gypsum Core, in combination with our unique Capax installation system, guarantees real dimension stability, resulting in 100% straight aligned Ribs over their full lifetime, regardless humidity and temperature changes.



#### QUICK INSTALLATION

Capax is our unique aluminum profile installation system that provides you a concealed, reliable, quick and cost saving installation. The Quick-Up assembly system is a user friendly aluminum grid offering installation reliability and a perfect visual result. No tools are needed to assemble the interlocking components. A demountable version is available, ideal when access to the ancillary systems is required.



#### STABILITY

Wood based ribs will show bulging or shrinkage when humidity and temperature change. A fiber gypsum rib is considerably less susceptible to these effects. Over time this will result in a planer and more linear installation.



#### INSTALLATION

All Gustafs Linear solutions are installed with an extremely user-friendliness provided by the Capax Quick-Up concept, with interlocking components, eliminating the need for tools and offering demountable installations.



#### SUSTAINABILITY

Using a fiber gypsum core naturally results in extremely low emissions and a very high rate of recycled content. Being located in Sweden gives us the opportunity to produce with renewable power sources only.



#### FIRE

The high density nonflammable core and the surface veneer's strongly bound adhesion to the fiber gypsum rib give our ribs the classification "Reaction to fire A2-s1,d0"



#### ACOUSTICS

Our linear system automatically gives a relatively large open area of 24% which warrants for a good sound absorption over a wide band of frequencies. The three dimensional shape will also act like a sound diffuser.



## veneer

Wood has a natural variation in structure and colour tone which ages in harmony with nature. The fact that wood is a natural material is an intrinsic aspect of its charm and attraction. It goes without saying that we do our outmost to fulfill requests for other veneers. We offer two choices of genuine veneer, NATURE and GEMINI.

## lacquer & gloss

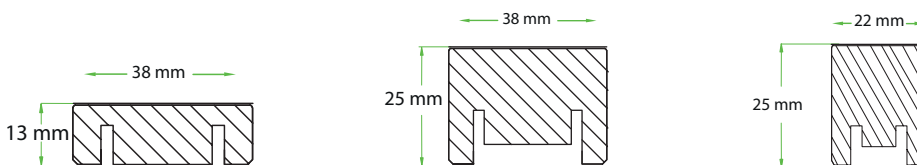
Prior to delivery the ribs are given a resilient and attractive surface finish. A clear lacquered finish is by far the most common maintenance-free and durable finish for wooden surfaces. Utilizing a multi-stage lacquering process, our surface finish achieves these demands while aspiring to maintain technical aspects such as our fire retardation and environmental goals.

## RIB DESIGN

## customized standard

The Stripe XL ribs are available in two different thicknesses; 13 and 25 mm.

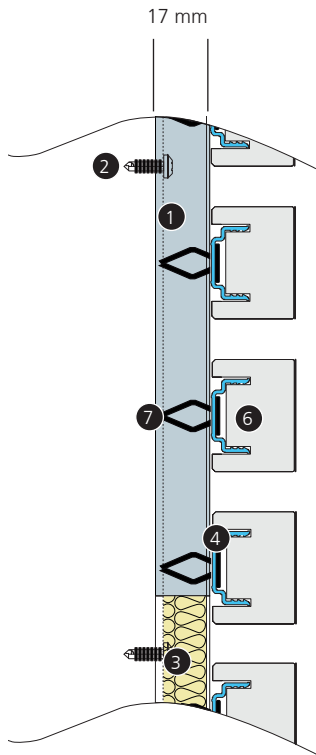
The standard width is 38 mm. Using our standard installation method, the gap between the ribs is 12 mm. You can also combine different dimensions.



## GUSTAFS ACOUSTIC LINEAR RIBS

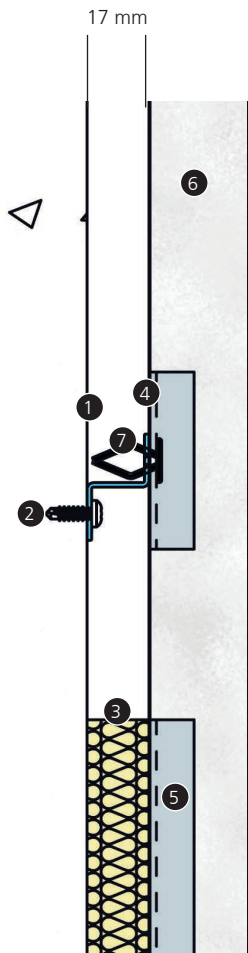
ACOUSTICS	Typ	Spacing	Slott (D)	Ribs on cc	Open area	WALL: 45 mm insulation + 30 mm air void (Hz/αp )								CEILING: 45 mm insulation + 200 mm air void (Hz/αp )							
						αw	NRC	125	250	500	1000	2000	4000	αw	NRC	125	250	500	1000	2000	4000
Sound absorption	Linear	12 mm	∞	50 mm	24%	<b>0,70-C</b>	<b>0,80</b>	0,30	0,90	1,00	0,75	0,60	0,65	<b>0,70-C</b>	<b>0,80</b>	0,50	0,95	0,85	0,75	0,60	0,65
	Linear*	12 mm	∞	50 mm	24%	<b>0,65-C</b>	<b>0,70</b>	0,05	0,35	0,90	0,90	0,70	0,65	-	-	-	-	-	-	-	-
	Linear	62 mm	∞	100 mm	62%	-	-	-	-	-	-	-	-	<b>0,95-A</b>	<b>1,00</b>	0,35	0,95	1,00	1,00	0,95	0,75

\* Tested with 17 mm insulation only, no air void

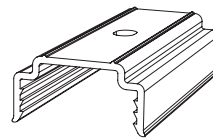


1. Capax BASE-W
2. Wall fixing screw
3. Air gap or insulation
4. Capax U-FIX
5. Capax in-line connector
6. Gustafs BF Stripe XL
7. Spring clips
8. U-FIX Screw
9. Acoustex - Acoustic felt

The installation is made with screws or, for demountable ribs, spring clips.



## CAPAX WALL PROFILES



U-FIX-50, Gripper for Stripe XL, with hole, length 50 mm



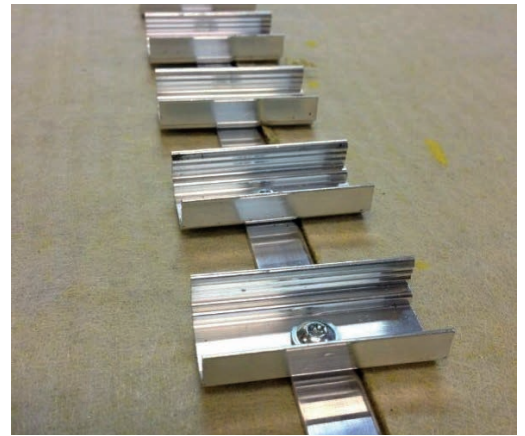
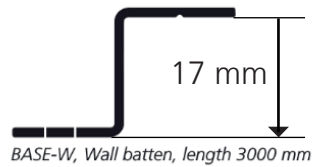
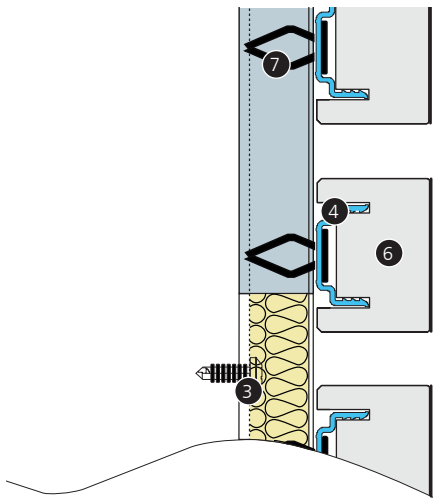
U-FIX 200, In-line connector for Stripe XL, length 200 mm



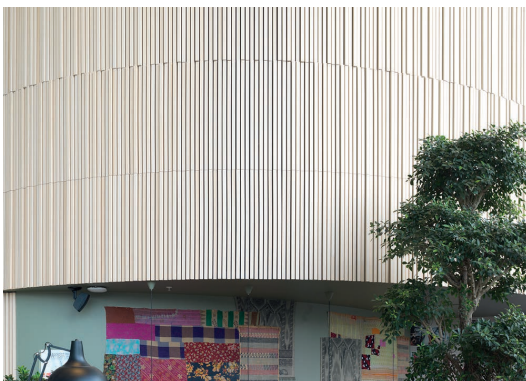
BASE-W, Wall batten, length 3000 mm

## INSTALLATION POSSIBILITIES

### STANDARD INSTALLATION FOR 17 MM INSULATION



### CONCEALED AND SIMPLE, STANDARD

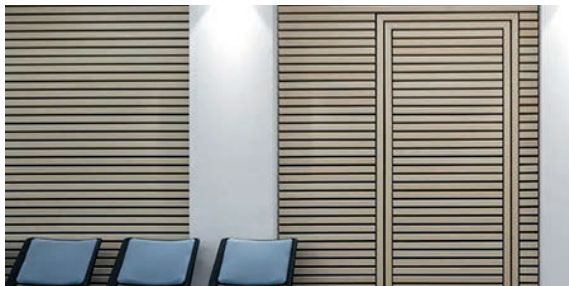


### STANDARD CURVED DOWN TO 300MM RADIUS

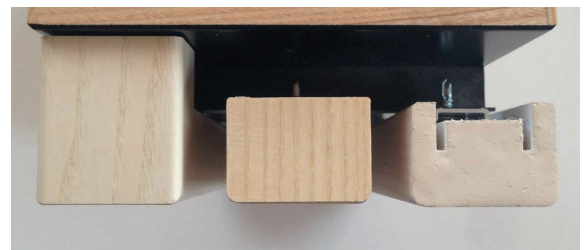


## DETAILED SOLUTIONS

### DOOR SURROUNDINGS



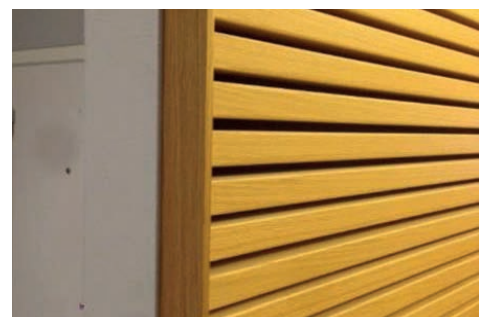
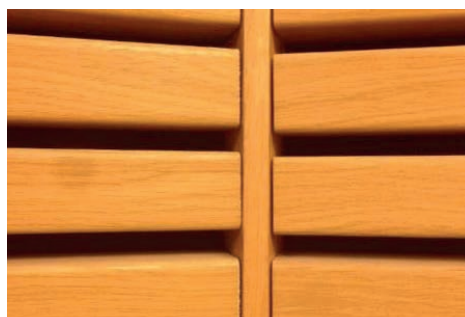
### END FINISH



MITERED

VENEERED

PAINTED





## FIRE CLASSIFICATIONS

### Fire Classifications Gustafs BF Stripe XL

**GUSTAFS**   
DESIGNED FOR EYES AND EARS

System	Core Material	Modell	VENEER				HPL		CPL		FOIL		
			Lacquer	Stain	Paint	Print	-	Print	-	Print	-	Paint	Print
Gustafs BF Stripe XL	High Density Fibre Gypsum	Rib	A2-s1,d0	A2-s1,d0	A2-s1,d0	A2-s1,d0	-	-	-	-	A2-s1,d0	A2-s1,d0	A2-s1,d0
	HIR Sandwich	Rib	B-s1,d0	B-s1,d0	B-s1,d0	B-s1,d0	-	-	-	-	B-s1,d0	B-s1,d0	B-s1,d0
	FR-MDF (B-s1,d0)	Rib	Core Class	Core Class	Core Class	Core Class	-	-	-	-	Core Class	Core Class	Core Class
	MDF	Rib	D-s2,d0	D-s2,d0	D-s2,d0	D-s2,d0	-	-	-	-	D-s2,d0	D-s2,d0	D-s2,d0

## SHORT FACTS

Type	Gustafs BF Stripe XL Rib System – A2 fire class
Core	Reinforced fibre gypsum, high density, 1200 kg/m <sup>3</sup>
Backside design	Grooved for use with the concealed Capax installation system
Acoustic felt	Black, Gustafs Acoustex 0,2 mm B-s1,d0 Black, Gustafs Acoustex 0,1 mm A1-s1,d0 White, Gustafs Acoustex 0,2 mm B-s1,d0 Grey, Gustafs Acoustex 0,2 mm B-s1,d0
Standard Dimensions (TxWxL)	13x38x2970 mm 25x38x2970 mm 25x22x2970 mm
Customized Dimensions (TxWxL)	25x <b>88</b> x2970 mm, and other shorter lengths
Installation system Wall	Gustafs Capax aluminium profiles and clips, containing: Capax Base-W battens installed cc 600 mm perpendicular to the ribs + concealed U-FIX every 600 mm of rib length (5 pcs U-FIX per 2400 mm rib length and 42 pcs of U-FIX per m <sup>2</sup> .)
Reaction to Fire	A2-s1,d0 (EN 13501-1) (Valid for the whole system, the ribs including the surface, the surface treatment, the installation with a void filled or with insulation, and allowing all kinds of post treatments like cutting)
TVOC	Approved emissions (EN ISO 16000-9)
Formaldehyde	Approved emissions (EN 717-1)
Urea formaldehyde	Not added
Recycled Material	17% Post Consumer
Certified Wood	FSC available, Certificate Code: SCS-COC-005137
EPD	Available
Production Site	City: Gustafs / country: Sweden
Life time	Expected > 50 years

Gustafs Scandinavia AB  
Stationsvägen 1  
SE-781 60  
Gustafs, Sweden

Tel: +46 (0)243 79 20 20  
Email: [info@gustafs.com](mailto:info@gustafs.com)  
[www.gustafs.com](http://www.gustafs.com)

**GUSTAFS**   
DESIGNED FOR EYES AND EARS